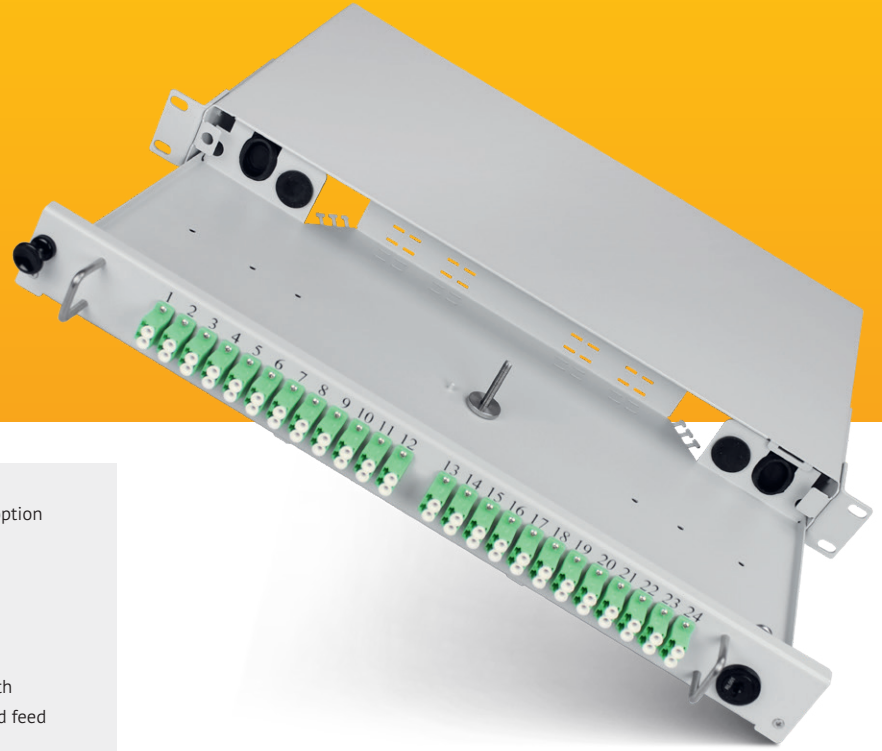


WAVEPACE®

Pull-out panel

Splice patch panel for up to 48 port LC/APC



- > 1 RU pull-out panel for splicing and patching with 19" mounting option
- > Robust metal construction with pull-out tray
- > Mounting bracket adjustable in depth
- > Pre-installed with 24 LC/APC duplex adapters
- > Option to include up to 4 splice trays
- > Includes separate horizontal cable routing bracket for appropriate installation on the front without disturbing the systems underneath
- > Rear cable entry, offset by 30 mm in depth for PG gland and angled feed with hammer head support using cable ties
- > Additional support options on the back to secure cables/wires using cable ties
- > Installation material and accessories are included in the scope of delivery

| | SP-48-Pull-Panel-LC/APC | SP-48-Pull-Panel-LC/APC-24-Crimp | SP-48-Pull-Panel-LC/APC-48-Crimp |
|------------------------------------|--|---|---|
| Application | Splice/patch | | |
| Interface | 24 LC/APC duplex adapters pre-installed, bolt for 4 splice cassettes | Ready-to-splice pre-installed with 24 LC/APC duplex adapters and 24 pigtailed according DIN color code, stored in 2 splice trays with crimp splice protection | Ready-to-splice pre-installed with 24 LC/APC duplex adapters and 48 pigtailed according DIN color code, stored in 4 splice trays with crimp splice protection |
| Capacity | 48 port LC/APC, 48 splices | | |
| Material | Metal, powder-coated | | |
| Cable feed | Rear cable entry (left/right offset) for PG 16 and PG 13,5 (each included once in scope of supply), PG gland and angled cable feed with hammer head support for cable ties | | |
| Connector quality | - | - | Grade B |
| Fiber type | - | - | G.657.A1 |
| Dimensions (L x W x H) [mm] | 465 x 240 x 44,45 (1 RU), separate horizontal cable routing bracket: D = 50 mm | | |
| Special features | Key-lock system at right hand side, separate horizontal cable routing bracket | | |
| Color | Light grey, RAL 7035 | | |

